

### VE781010

10M True 4K HDMI Active Optical Cable (True 4K@10m)



**Enjoy True 4K Cinematic Clarity with HDMI AOC**

10 m / 20 m / 30 m  
True 4K HDMI Active Optical Cable

The VE781010, [VE781020](#), and [VE781030](#) are hybrid True 4K HDMI Active Optical Cables that integrate both optical fiber and copper wires, enabling seamless high-bandwidth data transmission in AV installations. With a slim 4.5 mm outer diameter, these EMI-resistant HDMI Active Optical cables come in lengths of 10, 20, and 30 meters, delivering vivid True 4K (4096 x 2160 @ 60 Hz, 4:4:4) visual clarity over long distances, making them ideal for meeting rooms, home cinemas, and digital signage setups.

**4K  
TRUE**



Anti-EMI



HDMI / 18 Gbps

**HDCP  
2.2**



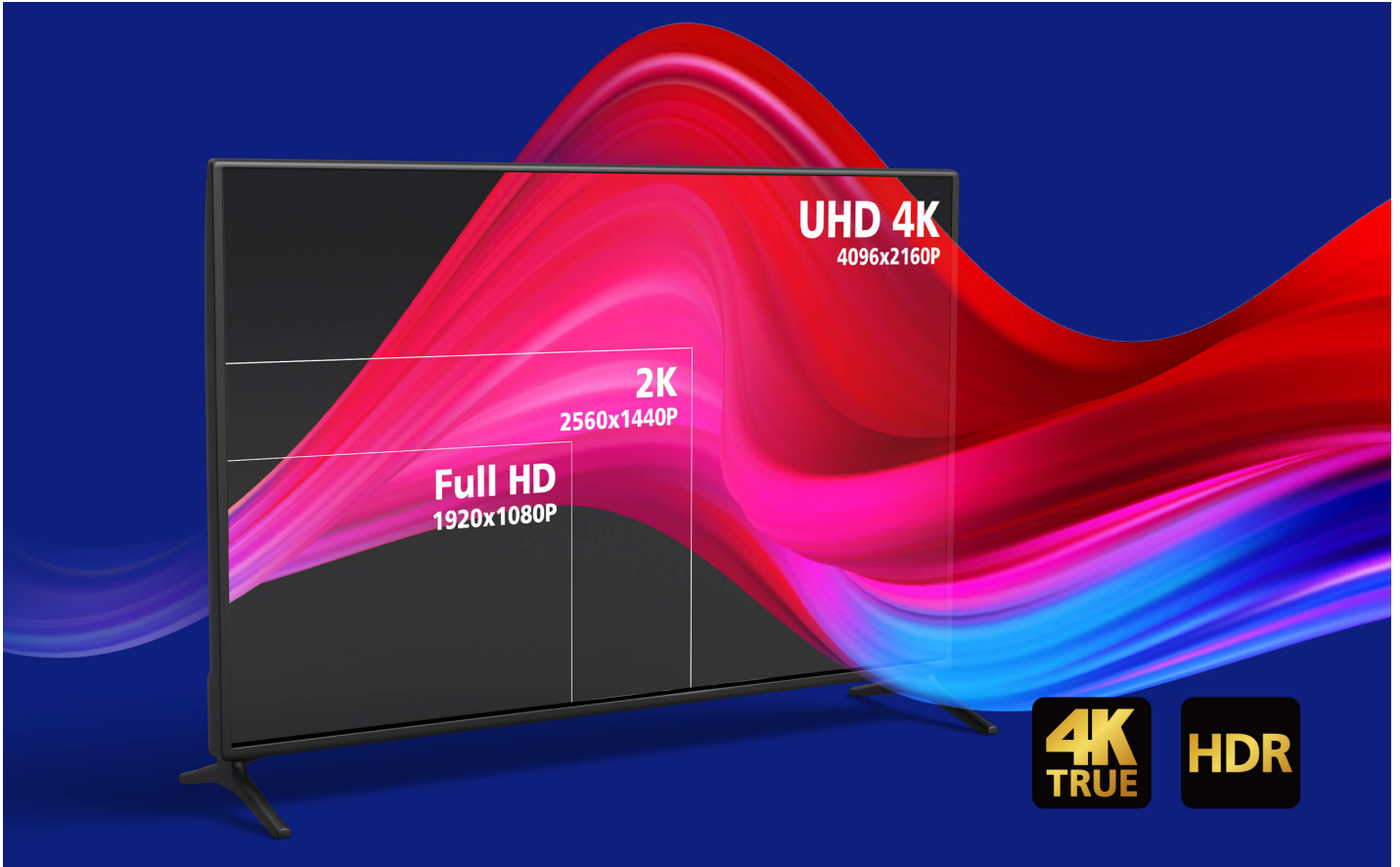
**HDR**



ARC

**True 4K HDR, True Immersion**

Indulge in the unmatched realism of video resolution up to 4096x2160@60Hz 4:4:4, powered by 18Gbps ultra-high-speed bandwidth. This ensures smooth, vibrant image quality with stunning clarity, rich colors, and exceptional contrast, offering a truly immersive viewing experience.



**Dive in Like It's Tangible!**

Engage in a more captivating gaming experience with crisp visuals, dynamic perspectives, minimal motion blur, and enhanced fluidity. With support for 48-bit deep color and HDR, enjoy stunning color accuracy and contrast for a truly immersive 3D adventure.

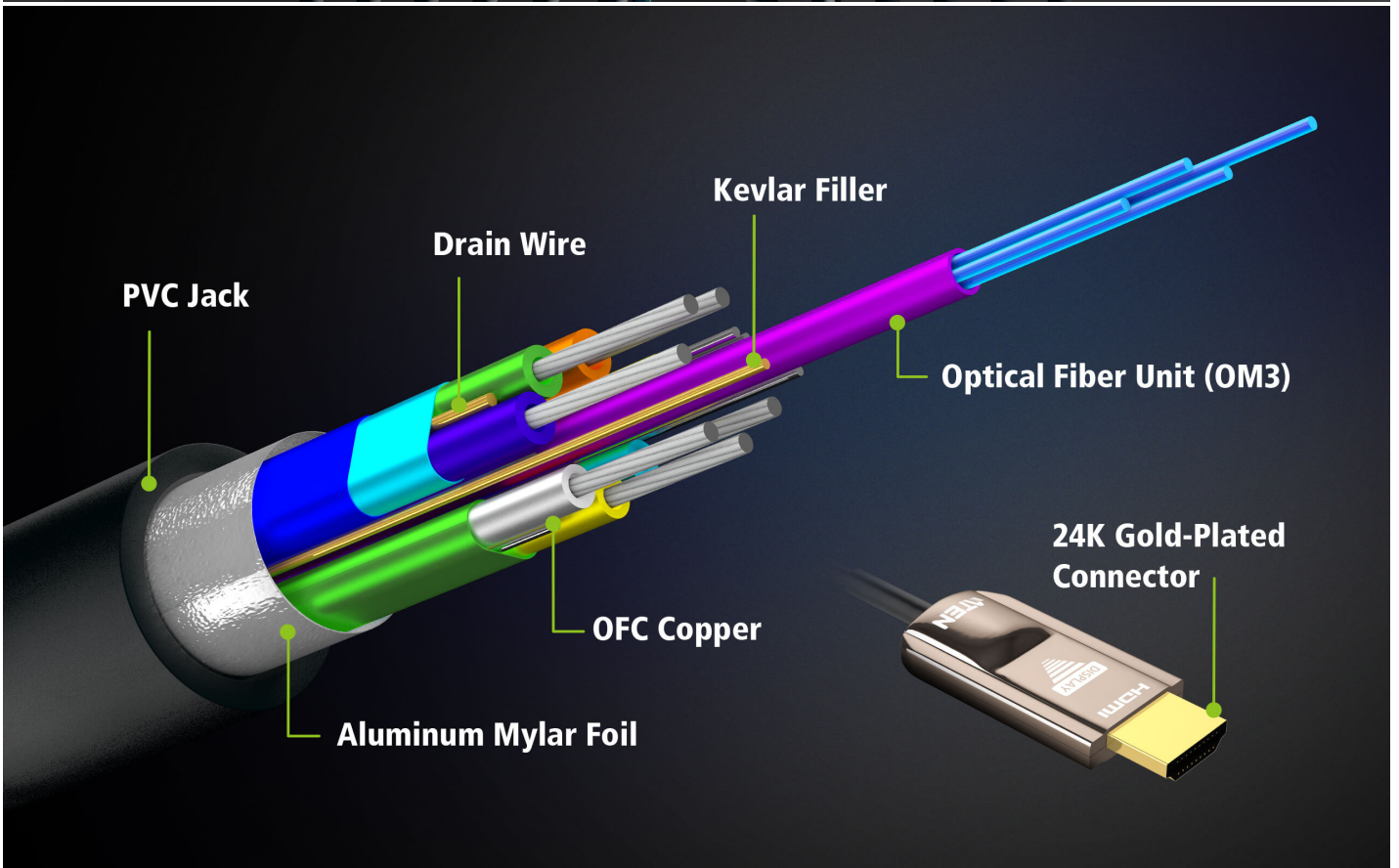
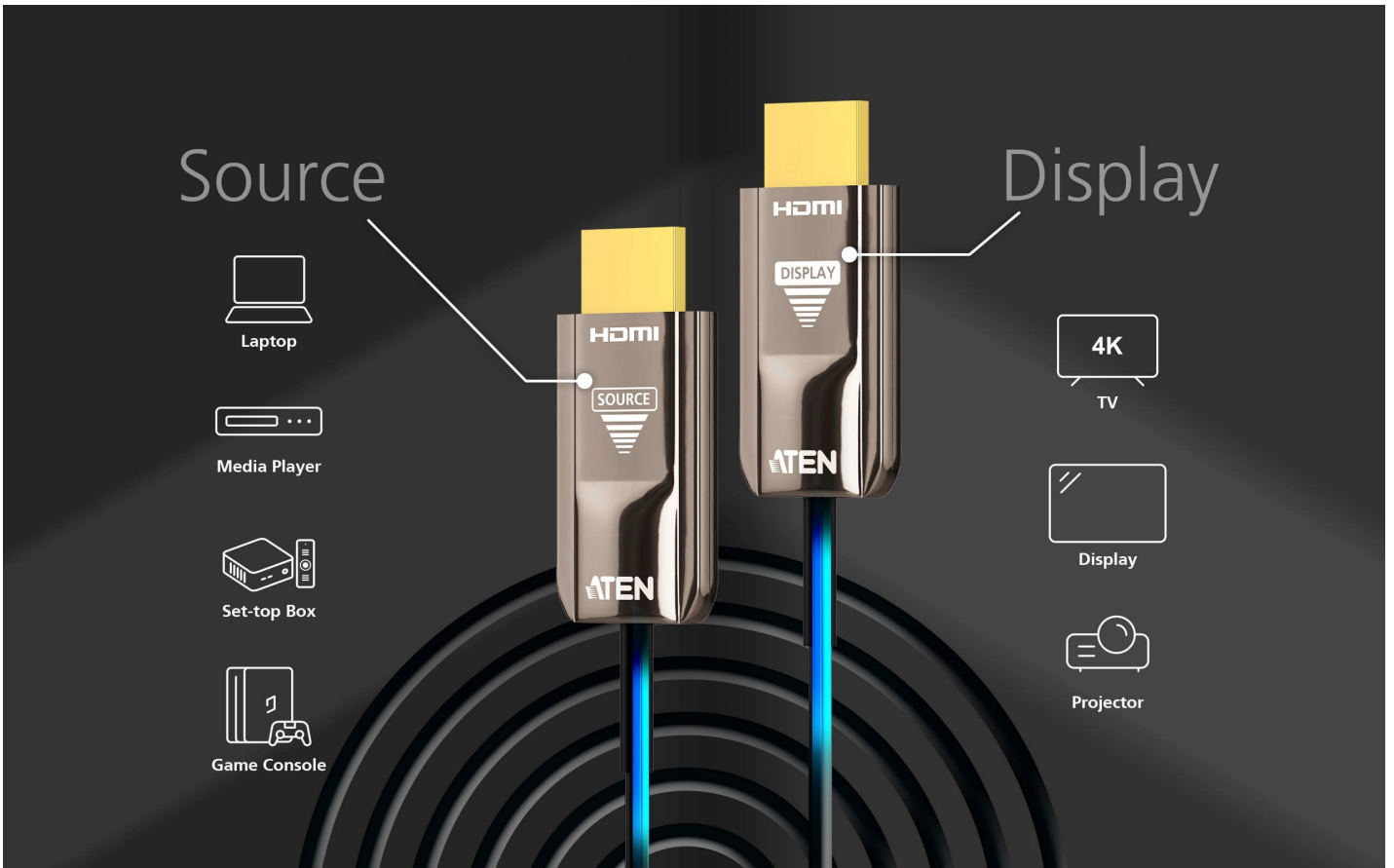
**Superior Audio Fidelity with ARC Enhancement**

ARC (Audio Return Channel) support enables two-way audio transmission between the display and the audio system, simplifying AV connections and ensuring high-quality audio output for streaming content, gaming, and other multimedia experiences.



**Broad Compatibility**

The HDMI Active Optical Cables are compatible with a wide range of AV devices, providing unidirectional connections to source and display devices, respectively.



**Remarkable Engineering, Industry-Proven Quality**

The 4K HDMI Active Optical Cables feature a German chipset, ensuring stable AV performance without blinking, black screens, or snowflakes. These cables are certified for safety and emissions by CE, FCC, RoHS, REACH, UL VW-1, and meet Class-A/Class-B EMC standards.

- **OM3 Optical Fiber:** Delivers high-speed bandwidth with no delays or flashing issues.
- **Kevlar Filler:** A material used in bulletproof vests, it enhances tensile strength, withstanding pulling forces of up to 24 kg and over 10,000 bending cycles without failure.
- **Oxygen-Free Copper (OFC):** Improves conductivity, durability, and reduces interference.
- **Double-Layer Aluminum Shield:** Provides robust protection against EMI and EMR, enhancing ARC functionality.
- **24K Gold-Plated Connector:** Designed to endure over 10,000 plug/unplug cycles for long-lasting performance.

- 1.
- 2.
- 3.
- 4.
- 5.
- 6.
- 7.



Meeting Room / Office



Home Cinema



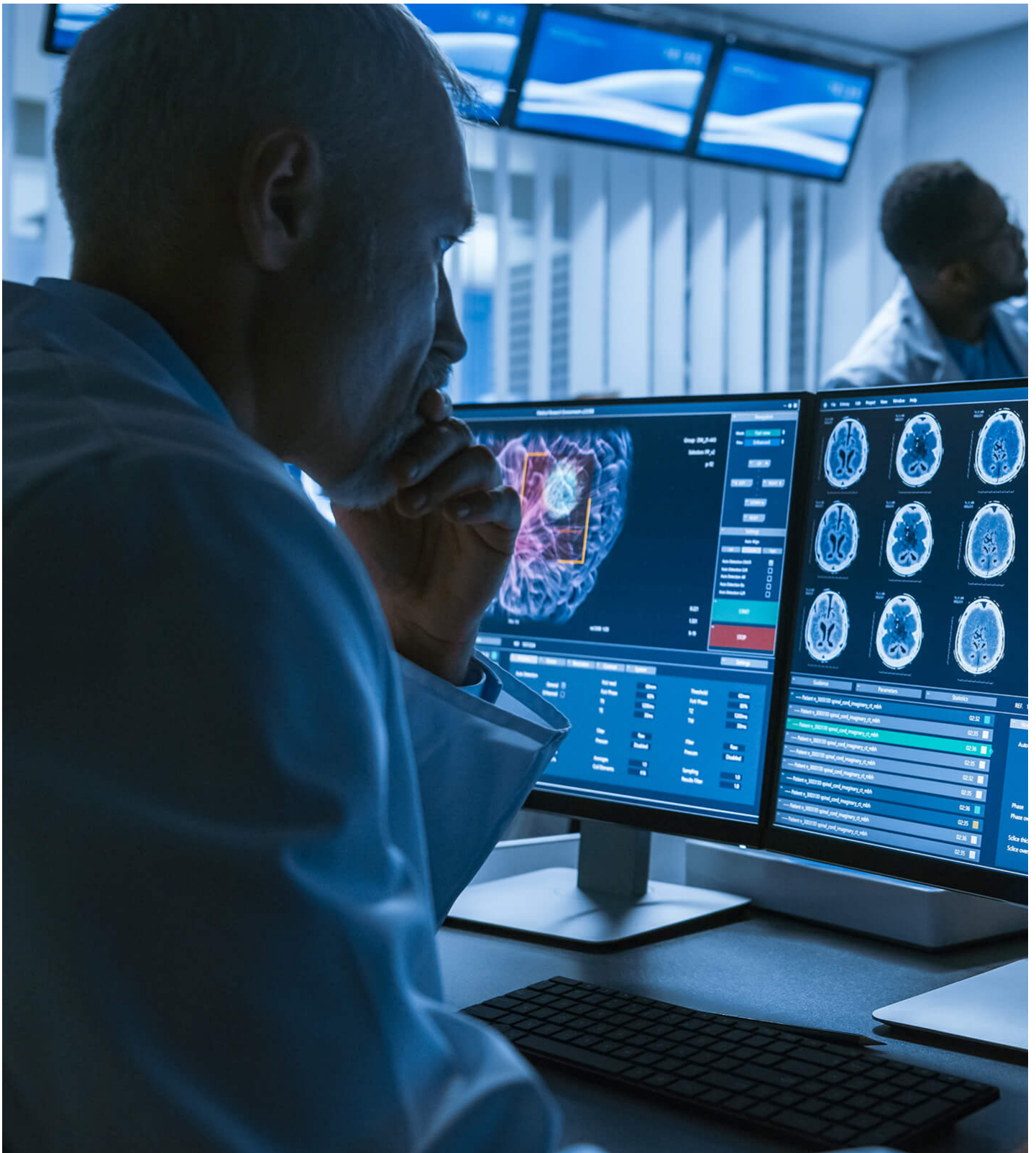
Classroom



Digital Signage



Museum



Medical Facility

[Previous](#) [Next](#)

Talk to Our Experts

If you prefer to have ATEN contact you, please complete the form and a representative will be in touch with you shortly



Specifications

|                             |  |
|-----------------------------|--|
| Cable Length                | 10M / 32.8ft   |
| Cable Type                  | Hybrid type with optical fiber (OM3) and copper wire   |
| Video Input                 |  |
| Interfaces                  | 1 x HDMI 19-pin Type-A Male  |
| Video Output                |  |
| Interfaces                  | 1 x HDMI 19-pin Type-A Male  |
| Video                       |  |
| Max. Data Rate              | 18 Gbps (6 Gbps per Channel)   |
| Max. Pixel Clock            | 600 MHz (Max.)   |
| Max. Resolutions / Distance | Up to 4096 x 2160 / 3840 x 2160 @60Hz (4:4:4) / 10M<br>*Color sub-sampling: 4:4:4 / 4:2:2 / 4:2:0<br>*Color Depth: 30 / 36 / 48 bit  |
| Compliance                  | HDMI (3D, Deep Color, 4K, HDR, ARC)<br>HDCP 2.2  |
| Communication               |  |
| Signals                     | TMDS / HDCP 2.2 / EDID / CEC   |
| Audio                       |  |
| Input                       | PCM 8-channel, Dolby Digital True HD, DTS-HD Master Audio  |
| Output                      | PCM 8-channel, Dolby Digital True HD, DTS-HD Master Audio  |
| Conductor                   |  |
| Construction                | 7 x Tinned Copper wire strand<br>4 x OM3 Optical Fiber (50/125um)  |
| Notification                | Bend Radius: 20mm (Min.)<br>Compression Load Resistance: Max. 50kg (500N)<br>Cable Filler: Kevlar<br>Cable Marking: ATEN INTERNATIONAL --- HIGH SPEED HDMI HYBRID ACTIVE OPTICAL CABLE 4K@60Hz 18Gbps -- PVC CE EU RoHS EC ZONE/DEVICE<br>* NO external power required |
| Certifications              |  |
| Certifications              | Safety and Emission: CE / FCC / RoHS / REACH / UL VW-1<br>EMC Class-A / Class-B  |
| Power Consumption           | DC5.0V:0.25W:0.05ABTU/h<br><br>Note:<br>● The measurement in Watts indicates the typical power consumption of the device with no external loading.<br>● The measurement in BTU/h indicates the power consumption of the device when it is fully loaded.                |
| Jacketed                    |  |
| Material                    | PVC (85P)<br>Color: Black  |
| Environmental               |  |
| Operating Temperature       | 0°C to 50°C (32°F to 122°F)  |
| Storage Temperature         | -20°C to 70°C (-4°F to 158°F)  |
| Humidity                    | 0 - 85% RH, Non-Condensing   |
| Physical Properties         |  |
| Housing                     | Connector Case: Zinc Alloy   |
| Weight                      | 0.35 kg ( 0.77 lb )  |
| Cable Outer Dimension       | 4.5mm (± 0.2mm)  |
| Carton Lot                  | 5 pcs  |

Diagram



**ATEN International Co., Ltd.**

3F., No.125, Sec. 2, Datong Rd., Sijhih District., New Taipei City 221, Taiwan  
 Phone: 886-2-8692-6789 Fax: 886-2-8692-6767  
 www.aten.com E-mail: marketing@aten.com



© Copyright 2015 ATEN® International Co., Ltd.  
 ATEN and the ATEN logo are trademarks of ATEN International Co., Ltd.  
 All rights reserved. All other trademarks are the property of their respective owners.