

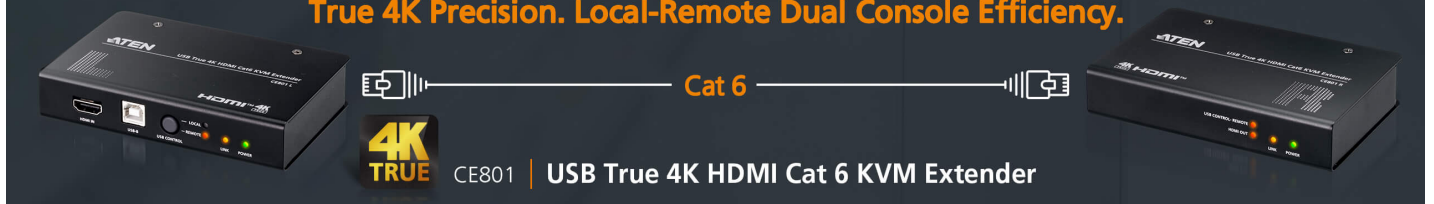
### CE801

USB True 4K HDMI Cat 6 KVM Extender (4K @ 70 m / FHD @ 100 m)



## Enrich Every Interaction with KVM Reach up to 70 m

True 4K Precision. Local-Remote Dual Console Efficiency.



The CE801L and CE801R are USB HDMI Cat 6 KVM extenders designed to bridge the gap between local and remote consoles with smooth, efficient KVM operations. With the source computer connected to the CE801L, you can benefit from instantly responsive KVM control at the CE801R remote console – featuring uncompromising True 4K video, crystal-clear digital audio, high-speed USB peripheral data, and uninterrupted serial control over distances up to 70 meters, all via a single Cat 6 connection. When it comes to simplified KVM extension and ergonomic remote access with hardware securely located away from the workspace, the CE801 speaks for itself.

**4K  
TRUE**

Up to 70 m

**FHD**

Up to 100 m

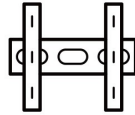
**HDR**



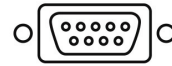
Digital Audio



Dual Console



Rack Mountable

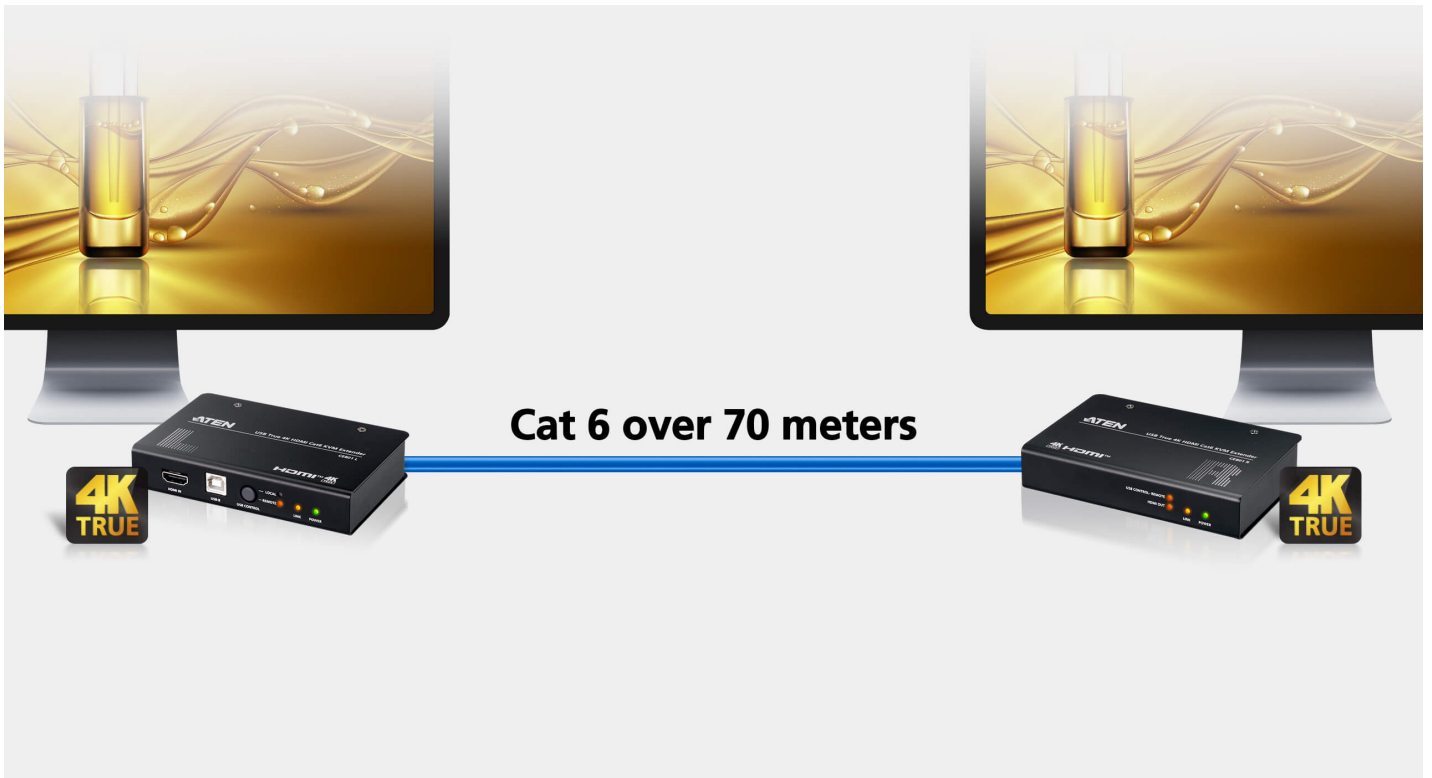


Serial Control

**True 4K KVM Extension up to 70 m**

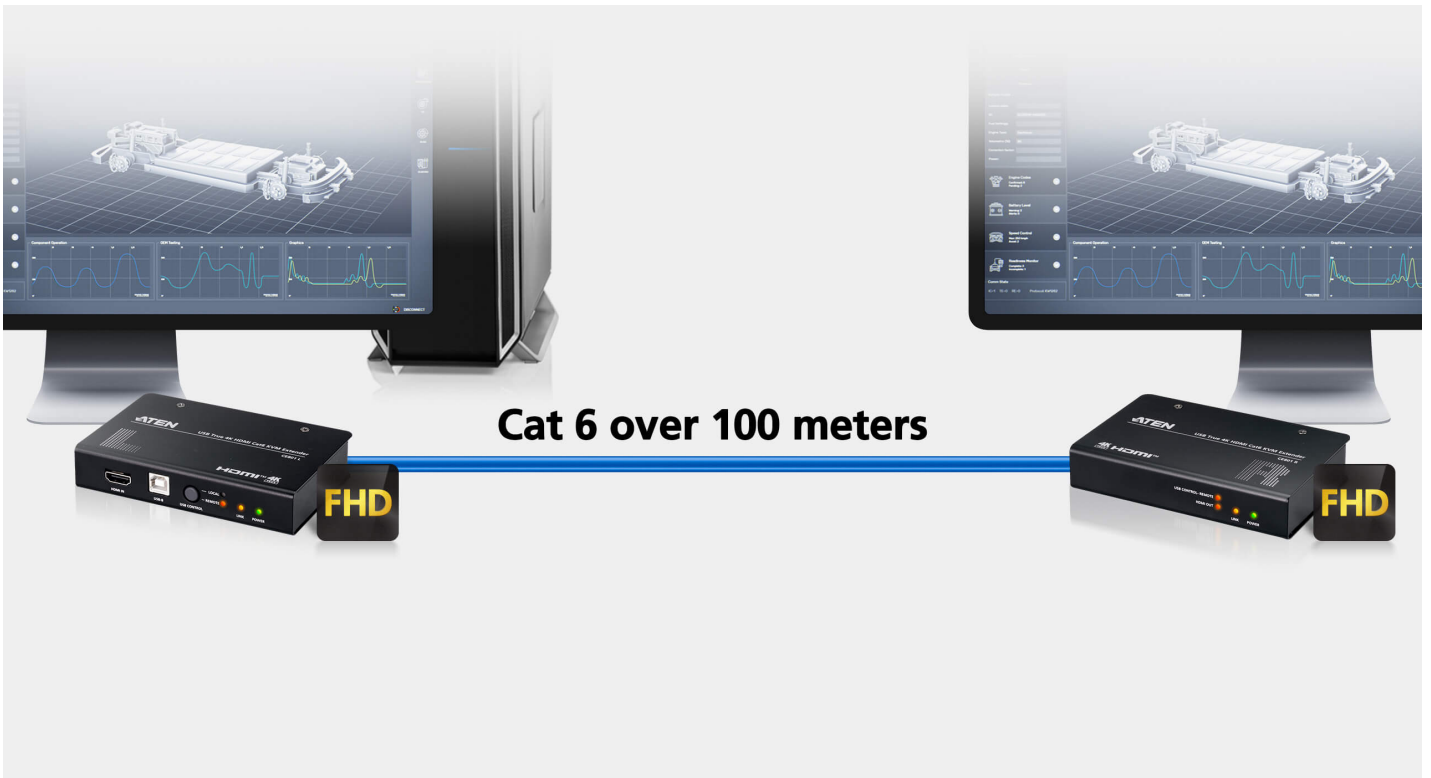
The CE801 extends KVM control up to 70 meters over a Cat 6\* connection – transmitting stunning True 4K video with HDR, along with USB data, digital audio, and serial control between local and remote consoles.

\* To ensure stable operation and adequate protection against electromagnetic interference (EMI), shielded twisted-pair (STP) cables shall be used, and the unit shall be properly grounded.



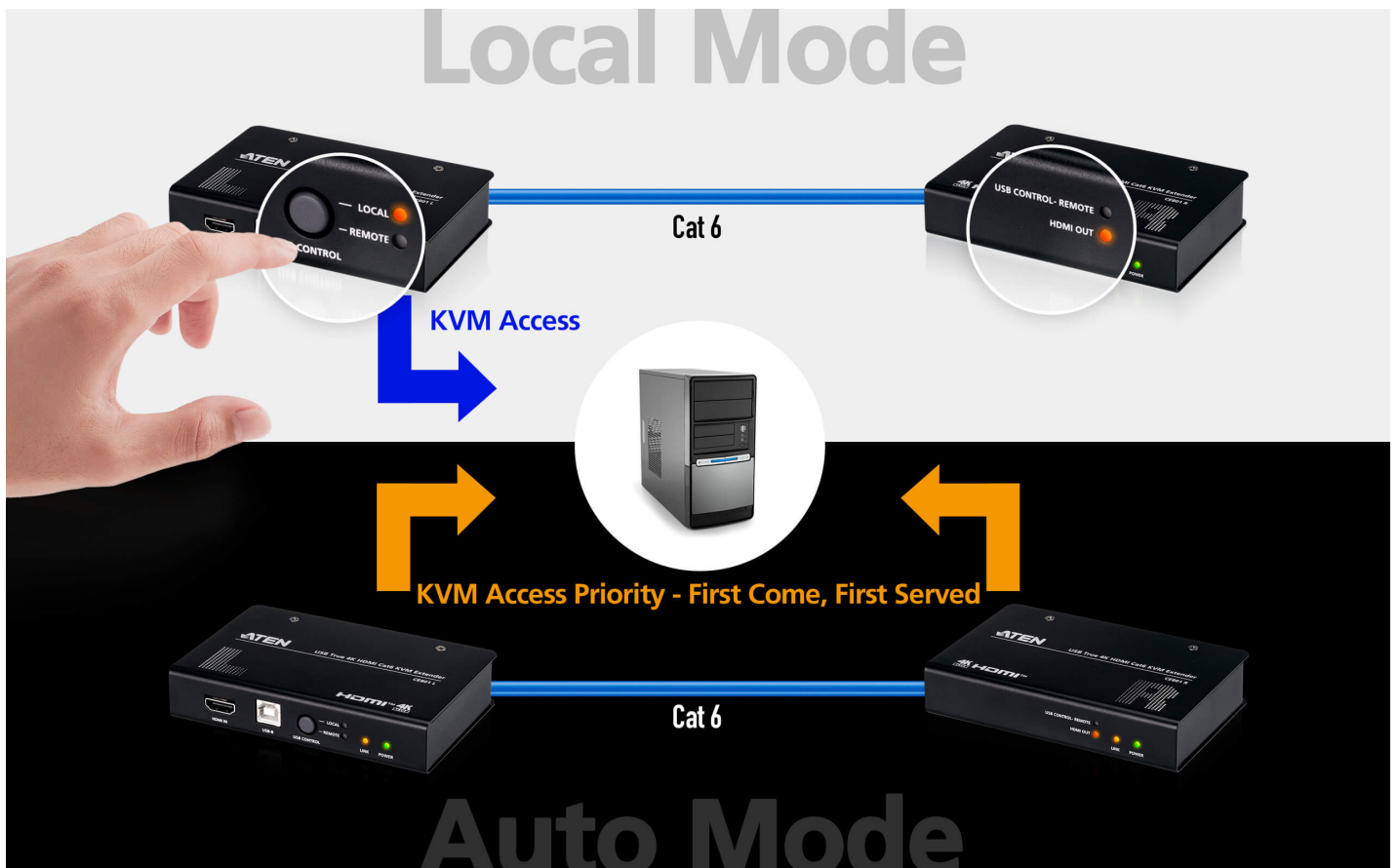
**FHD Long-Reach KVM Extension up to 100 m**

With the Long-Reach mode, the CE801 enables KVM extension up to 100 meters over a Cat 6 connection – delivering crisp 1080p video clarity with ease.



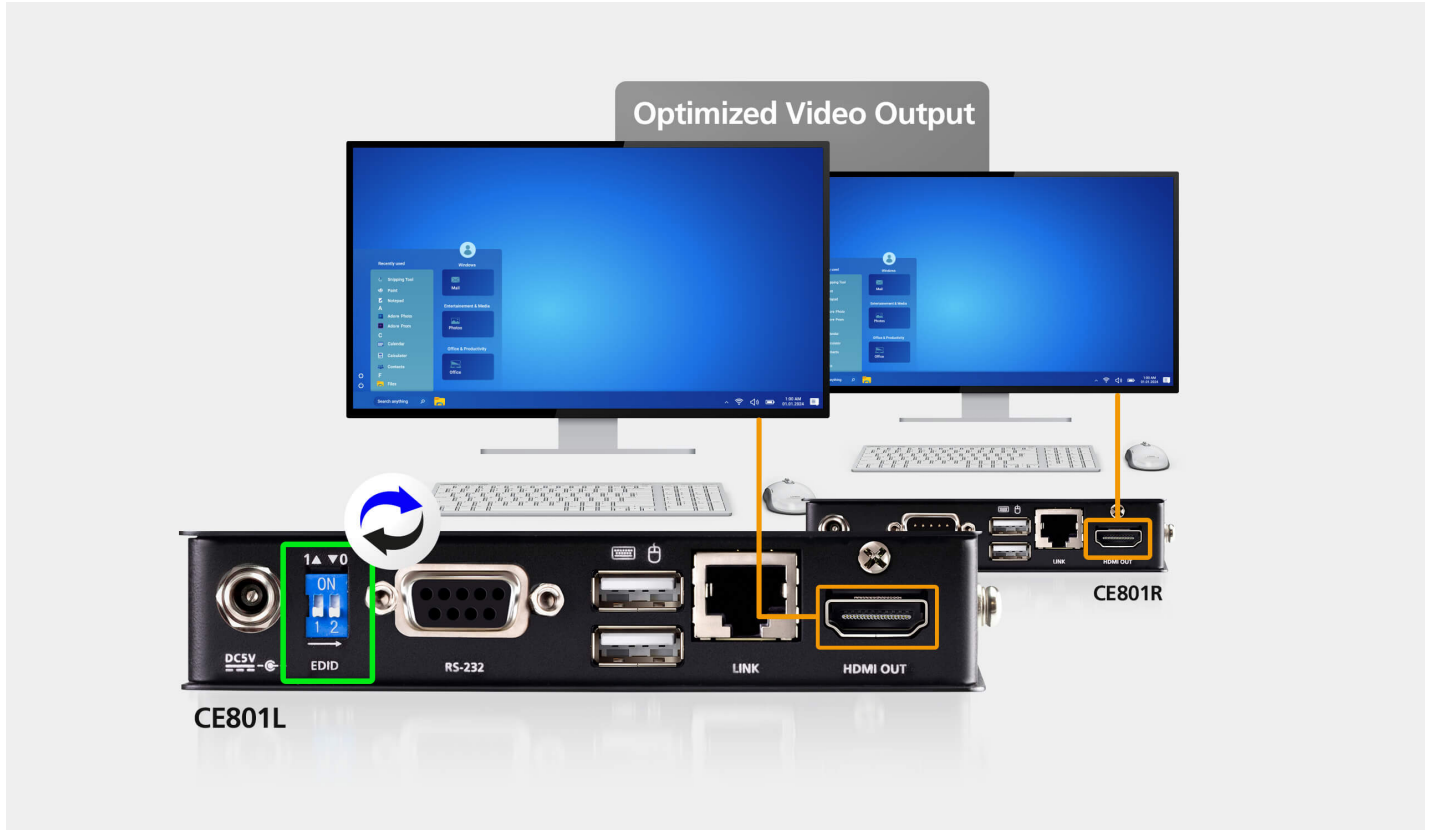
**Dual Console Access with Privileged KVM Control**

Pressing the pushbutton on the CE801L grants the local console priority KVM access to the source PC at any time (Local Mode). Pressing the button again releases this priority (Auto Mode), allowing KVM access from either the local or remote console – whichever gains control first.



**Optimal Video with EDID Switching**

To ensure optimum output quality on both the local and remote consoles, the EDID switches on the CE801L can be adjusted to configure the EDID for both HDMI outputs.



**RS-232 Serial Communication for Extended Control**

The CE801R is equipped with a serial port for connection to a serial device – such as a touchscreen or barcode scanner – which can be remotely communicated via RS-232 commands from a serial terminal (or PC) connected to the CE801L, facilitating real-time device interaction and data transmission between the local and remote consoles.



**Secure Installation for Reliable Power Supply**

The power adapter is secured with a screw lock on the DC jack, ensuring a stable power supply while preventing accidental disconnections.

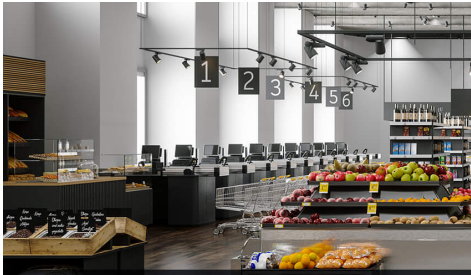


**Rack-Mountable Design**

The KVM extenders are compact and rack mountable, making them flexible for a space-efficient installation.



**Applications**



Retail



Manufacturing



Education



Control Room



Industrial Control



Medical Facility

Talk to Our Experts

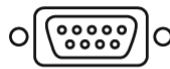
If you prefer to have ATEN contact you, please complete the form and a representative will be in touch with you shortly


Digital Audio



Dual Console



Serial Control



**Features**

CE801 is an extender kit that allows for sharp, life-like True 4K (3840 x 2160 @ 60 Hz 4:4:4) HDMI, RS-232, and USB transmission across 70 m over one single Cat 6 cable. Dual console USB Keyboard / Mouse operation is enabled by the USB control mode pushbutton switching USB console control privilege between the remote and local units. RS-232 extension capability facilitates uninterrupted communication between serialinterfaced devices and equipment, which are crucial in industrial control systems.

CE801 is ideal for medium to large scale applications where incredibly sharp and detailed visualization, multisignal extension, and privileged USB control via local / remote console are essential, including control centers, retail shops, factories, medical facilities, and home theaters.

- Extends HDMI video, USB keyboard/mouse control, embedded audio, and RS-232 control signals across 70 m over a Cat 6 cable\*
- Long reach mode – 1080p extension up to 100 m
- Supports resolutions up to 3840 x 2160 @ 60 Hz (4:4:4) with HDCP 2.2 / 2.3 compliance
- Dual console USB keyboard / mouse operation - control privilege between the remote and local units switchable via USB control mode pushbutton
- Supports HDR 10 for enhanced video quality
- Supports wide screen format
- Supports digital audio formats such as 7.1ch Dolby and DTS audio
- Plug-and-play with no software or driver required
- Built-in 8KV/15KV ESD protection
- Rack-mountable
- DC Jack with screw-lock ensures stable and secure connection

\* To ensure stable operation and adequate protection against electromagnetic interference (EMI), shielded twisted-pair (STP) cables shall be used, and the unit shall be properly grounded.

**Specifications**

Remote HDMI out	640 x 480 @ 60/67/72/75 Hz	1600 x 1200 @ 60 Hz
	640 x 480 60 Hz (4:3)	1680 x 1050 @ 60 Hz
	480p 60 Hz (4:3)/(16:9)	1920 x 1080 @ 60 Hz
	576p 50 Hz (4:3)/(16:9)	720p 50/60 Hz
	800 x 600 @ 56/60/72/75 Hz	1080i 50/60 Hz
	1024 x 768 @ 60/70/75 Hz	1080p 24/25/30/50/60 Hz
	1280 x 800 @ 60 Hz	1080p 60 Hz
	1280 x 1024 @ 60/75 Hz	3840 x 2160p 24/25/30 Hz
	1400 x 1050 @ 60 Hz	3840 x 2160p 50/60 Hz 4:2:0
	1440 x 900 @ 60 Hz	

**Diagram**

