

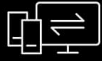
CS22H

2-Port USB 4K HDMI Cable KVM Switch with Remote Port Selector



Always Agile. Switch for Work and Play





Control 2 PCs



HDMI



4K@60Hz /
FHD@144Hz



Audio Enabled



USB Peripheral
Sharing



Bus-Powered



Easy Hook

CS22H
2-Port USB 4K HDMI Cable KVM Switch
with Remote Port Selector



HDMI[™]
HIGH-DEFINITION MULTIMEDIA INTERFACE



Control 2 PCs with one Keyboard / Mouse / Monitor

Boost your productivity and simplify your desktop setup with the CS22H USB 4K HDMI Cable KVM Switch. Whether you're working, creating, or playing, you can manage two computers using a single keyboard, mouse, and monitor, and switch effortlessly between them with just a push of a button.

Cross-Platform Integration

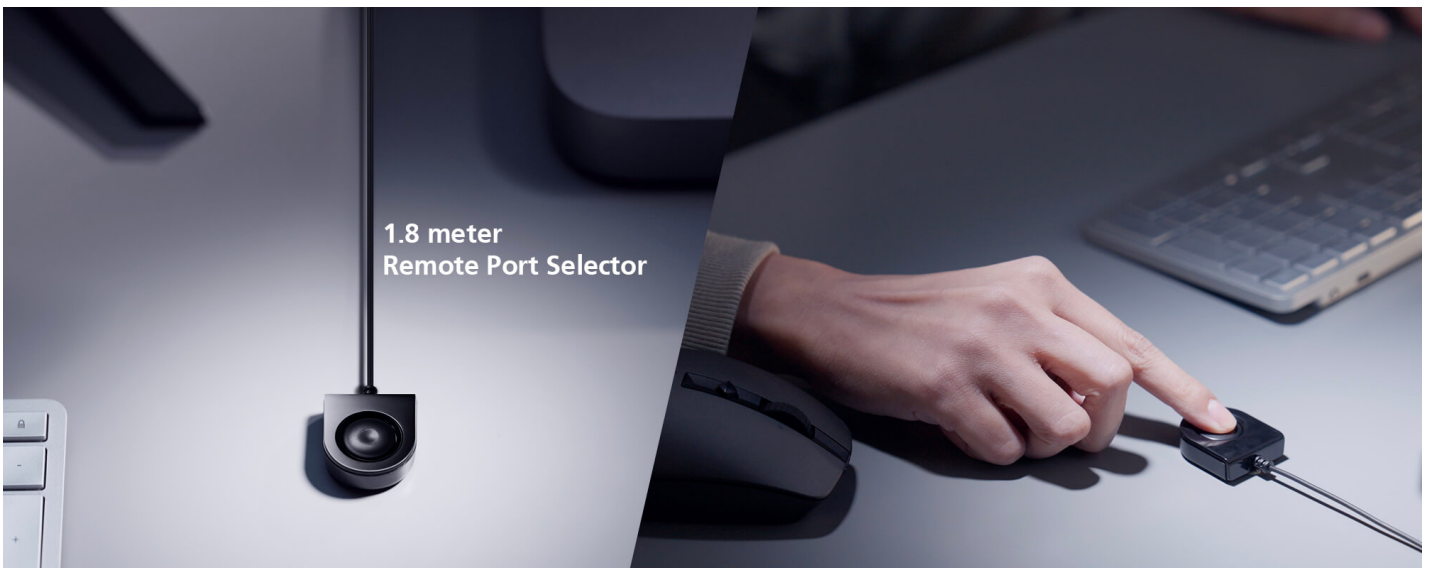
The CS22H is compatible with Windows, Mac, and Linux operating systems, enabling seamless integration of versatile computer workflows with the convenience of a one-button switch.





Switch Seamlessly with A Simple Pushbutton

The 1.8-meter remote port selector can be flexibly located, allowing quick and straightforward switching between 2 computers from anywhere on the desktop.



**Bus-Powered for Eco Efficiency**

The KVM switch becomes functional once connected to computers via USB, eliminating the need for additional power adapters.

All in One, Plug and Play!

The CS22H features a patented all-in-one design with integrated cables, offering USB 2.0 and HDMI 2.0 plug-and-play connectivity.



USB 2.0 Peripheral Sharing

The console USB ports are compatible with USB 2.0 peripherals, facilitating multitasking and data-intensive desktop workflows.



Stunning Visual Clarity and Smoothness

Experience stunning 4K@60Hz video clarity and FHD 144Hz visual performance with the CS22H. Elevate your desktop experience for work and play.





Audio On. Dive In.

Boost your desktop productivity with the addition of immersive audio.

Space Efficient Workspace Setup

The CS22H can be easily placed out of the way with the handy hook, ensuring optimized workspace efficiency.



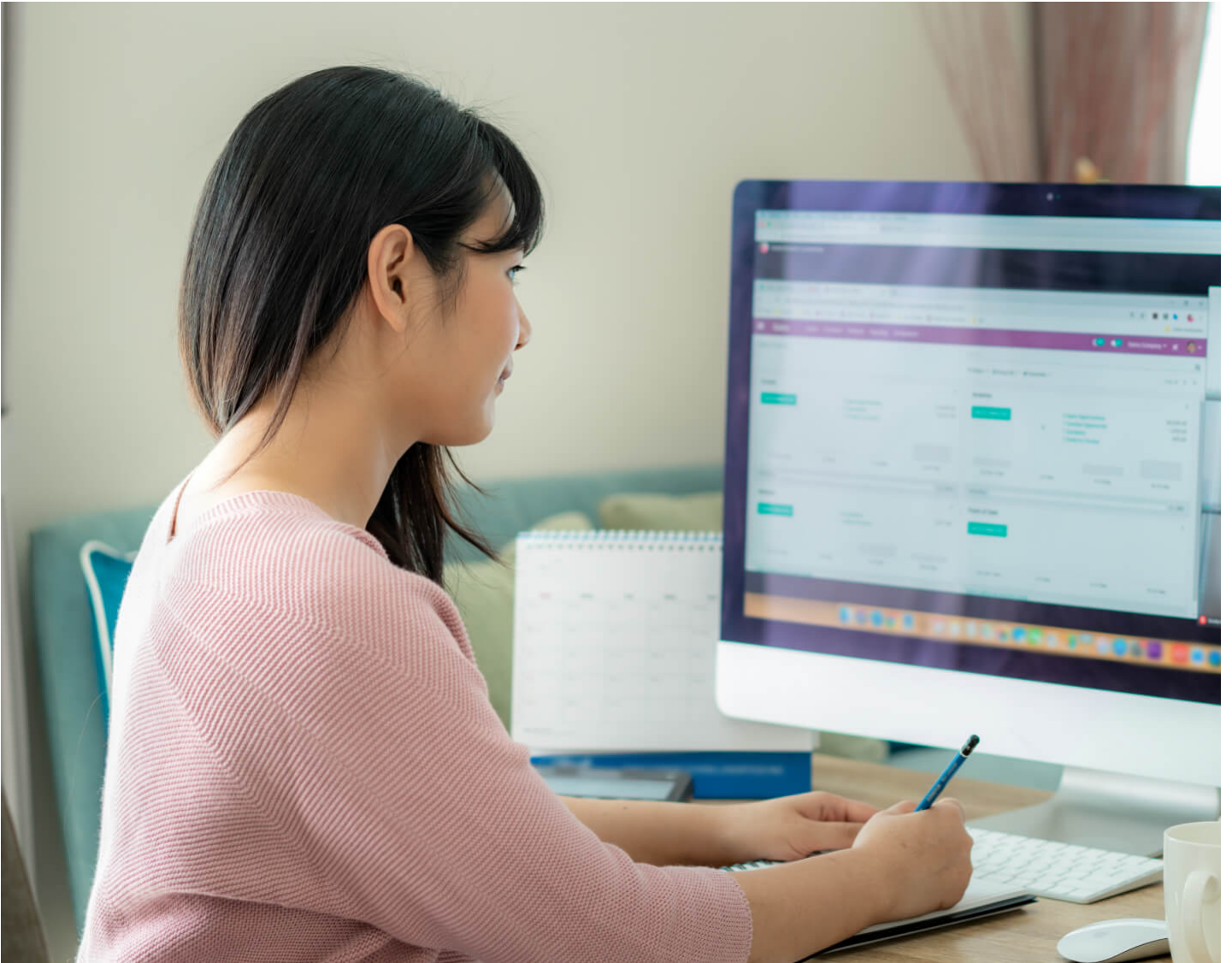
Applications

The CS22H Cable KVM switch is perfect for staying on top of various applications such as work, graphic/video creation, and gaming.

- 1.
- 2.
- 3.
- 4.



Office Desktop



Work from Home



Graphic Design / Video Editing



Entertainment

[Previous](#) [Next](#)

Product Comparison

Talk to Our Experts

If you prefer to have ATEN contact you, please complete the form and a representative will be in touch with you shortly

First Name *

Last Name *

- Country *

Company *

Email *

Phone Number *

- Customer Type *

Job Title *



Features

For a smart-looking, neat and tidy work environment, ATEN's patented all-in-one design Cable KVM Switches eliminate the bother of connecting multiple cables by consolidating keyboard, video and mouse cables into one, and building that cable right into switch.

The ATEN CS22H Cable KVM Switch can instantly access two computers with a USB and HDMI console while offering superior video quality up to 4K DCI (4096 x 2160 @ 60Hz), bringing users maximum convenience and optimum visuals.

When users want to switch between the computers, simply press the built-in remote port selector to enjoy intuitive operations. Moreover, the CS22H supports USB peripheral sharing, easily integrating data and ensuring uninterrupted data transmission.

Its compact and bus-powered design provides an efficient installation without bulky cable setups, and the newly-designed hook allows users to place the CS22H wherever they want to keep desktop tidy and well-organized. This plug and play switch is ideal for people who need quick control to multitask between two computers at the desktop in any environment.

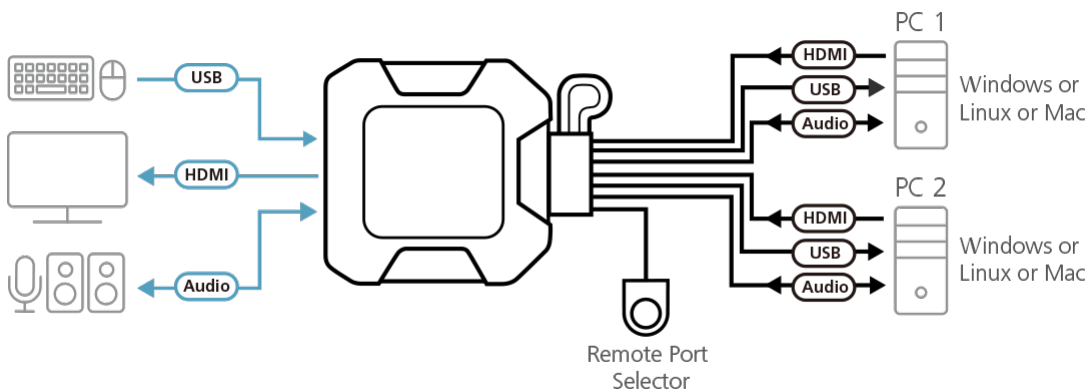
- One USB keyboard, mouse and one HDMI monitor control two HDMI computers
- Superior video quality – up to 4K DCI (4096 x 2160 @ 60Hz)
- Computer selection via remote port selector
- HDMI compliant; HDCP compliant
- Supports USB hot-plugging
- The console USB ports can be used for USB peripheral sharing *
- Multiplatform support – Windows, Mac and Linux
- Hook design for space-saving and organized workstation
- Plug and play
- Bus-powered – no external power adapter required

Note: * The CS22H may require an external power supply via the USB Micro-B Power Port. For the USB Micro-B cable connecting to the USB Micro-B Power Port, it requires a separate purchase based on the type of the power supply you use.

Specification

| | |
|------------------------------|---|
| Computer Connections | 2 |
| Port Selection | Remote Port Selector |
| Connectors | |
| Console Ports | 1 x HDMI Female 2 x USB Type A Female 1 x 3.5mm Audio Jack Female (Green) 1 x 3.5mm Audio Jack Female (Pink) |
| KVM (Computer) Ports | 2 x HDMI Male 2 x USB Type A Male 2 x 3.5mm Audio Jack Male (Green) 2 x 3.5mm Audio Jack Male (Pink) |
| Power (Optional) | 1 x USB Micro Type B Female |
| LEDs | |
| KVM Port (On Line /Selected) | 2 (White) |
| Cable Length | |
| KVM | 2 x 1.2 m |
| Remote Port Selector | 1.8 m |
| Emulation | |
| Keyboard / Mouse | N/A |
| Video | Up to 4096 x 2160 @ 60Hz, 2560 x 1440 @ 144Hz |
| Power Consumption | DC5V:1.4W:19BTU/h Note: <ul style="list-style-type: none"> • The measurement in Watts indicates the typical power consumption of the device with no external loading. • The measurement in BTU/h indicates the power consumption of the device when it is fully loaded. |
| Environmental | |
| Operating Temperature | 0 - 50°C |
| Storage Temperature | -20 - 60°C |
| Humidity | 0-80% RH, Non-condensing |
| Physical Properties | |
| Housing | Plastic |
| Weight | 0.34 kg (0.75 lb) |
| Dimensions (L x W x H) | 8.34 x 8.42 x 3.04 cm (3.28 x 3.31 x 1.2 in.) |
| Note | For some of rack mount products, please note that the standard physical dimensions of WxDxH are expressed using a LxWxH format. |

Diagram



ATEN International Co., Ltd.

3F., No.125, Sec. 2, Datong Rd., Sijhih District., New Taipei City 221, Taiwan
 Phone: 886-2-8692-6789 Fax: 886-2-8692-6767
 www.aten.com E-mail: marketing@aten.com



© Copyright 2015 ATEN® International Co., Ltd.
 ATEN and the ATEN logo are trademarks of ATEN International Co., Ltd.
 All rights reserved. All other trademarks are the property of their respective owners.